



# **Data transmission device Multiplexer DMX-1-2-3 USB Software**

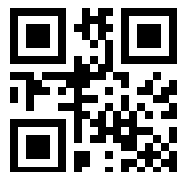
## **Software User manual**

**Read this User Manual before operating the instrument. After reading, retain it close at hand for future reference.**

**Translation of the German original user manual.**

**BA301001**

**BOB2040A**



**2019-02-22**

# **1 Preface**

## **Driver Installation Instructions for DIGIMATIC Interface**

### **DMX1-USB**

item number: 63AAA040

### **DMX2-USB**

item number: 63AAA037

### **DMX3-USB**

item number: 63AAA039

***Please take some time to read these instructions in their entirety. They have been kept brief and simple.***

## Table of Contents

1	Preface.....	2
2	System Requirements.....	4
3	Introduction.....	5
4	Install the Driver.....	6
5	View and Change the COM Port.....	7
6	Deinstall the Driver.....	8
7	Using Several DMX-USB Devices.....	9
8	Appendix A.....	10
9	Appendix B.....	14
10	Service network-EU.....	17

## **2 System Requirements**

Windows 2000,  
Windows XP,  
Windows Server 2003,  
Windows Vista,  
Windows Server 2008,  
Windows 7 oder Windows Server 2008 R2

a free USB interface

### 3 Introduction

Before you can use the DMX-USB you have to install two drivers. These drivers enable your application software to communicate with the DMX- USB via a *virtual communications port (VCP)*.

The first driver is a **USB serial converter** which establishes the connection to the DMX-USB through the USB interface and makes the data transfer available to a *virtual communications port (VCP)*.

The second driver is this **virtual communications port (VCP)** which allows your application software to contact the DMX-USB.

All required files can be found on the CD provided.

## 4 Install the Driver

To install the driver:

Leave your PC switched on and use the USB cable to connect the DMX- USB to your PC. Windows detects **new hardware**. Please follow the on- screen instructions and install the driver from the CD provided. The second driver should be installed the same way. The driver installation is described in detail in **Appendix A**.

## 5 View and Change the COM Port

Check in the **Device Manager** which COM port the VCP has been set to so that you know which COM port your application software can use to address the DMX-USB. Proceed as follows:

Go to the **Control Panel** in **Windows**. Go to the **Device Manager** (via **System** and **Hardware**). NB: How you get there, depends on your Windows version. Use the online help if required.

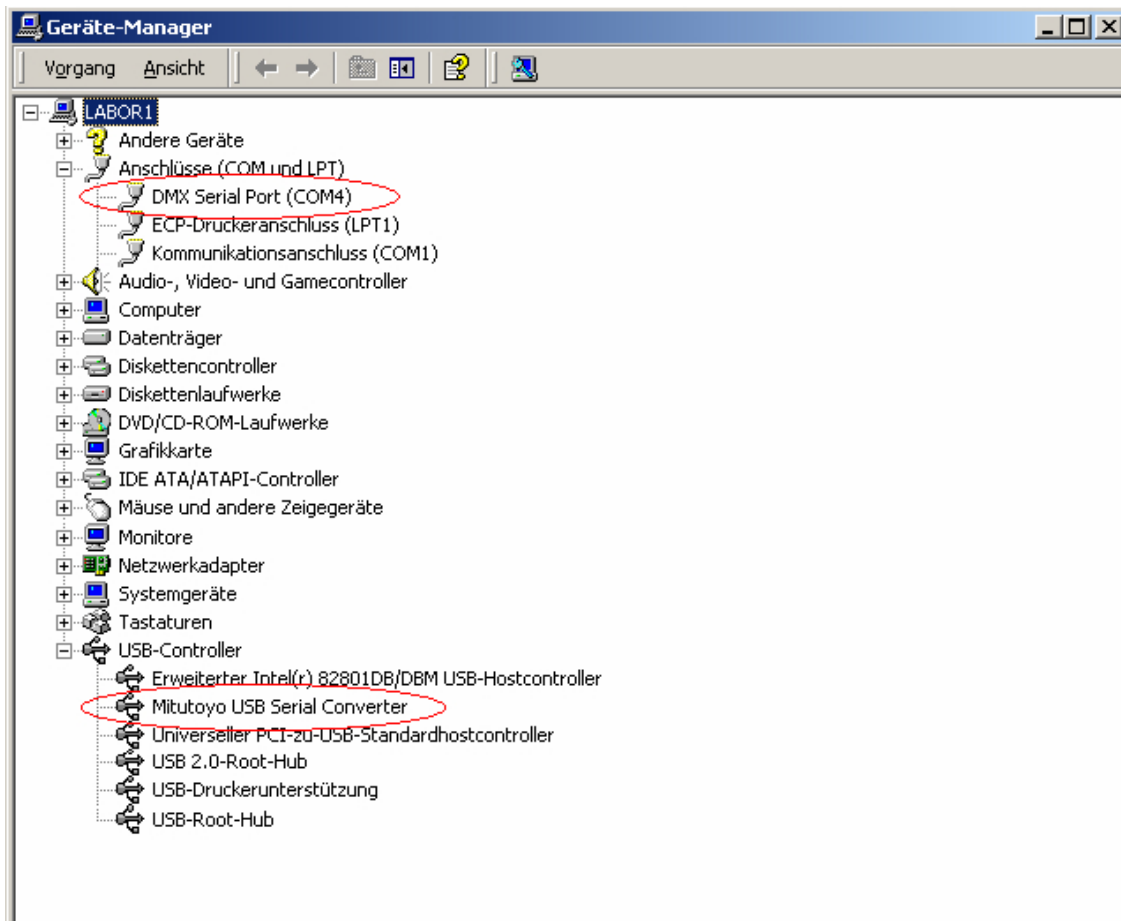


Image 5-1: Device manager

You will see **Mitutoyo USB Serial Converter** and **DMX Serial Port** listed. The **DMX Serial Port** indicates the COM port number you also have to specify in your application software, in this case **COM4**.

If you want to change the COM port number, right-click on **DMX Serial Port** and in the pull-down menu on **Properties**. In this window click on the **Port Settings** tab and then on **Advanced...** You can now choose a different COM port. Apply your changes by clicking on all **OK**. Make sure, however, that you didn't change any of the other options by mistake. Detailed instructions can be found in **Appendix B**.

## 6 Deinstall the Driver

You only have to deinstall the driver if you don't want to use the DMX- USB anymore in the future. This frees the COM port and disk space on your PC.



### CAUTION

**After deinstalling the driver all other devices using the same driver also don't work anymore. So, only deinstall the driver if you are sure that no other device uses the same driver anymore. According to the windows version the procedure to deinstall can differ.**

Remove the DMX-USB from your PC. Go to the *Control Panel* in *Windows*. Double-click on *Add or Remove Programs*. Click on *FTDI USB Serial Converter Drivers* and then on *Change/Remove*.

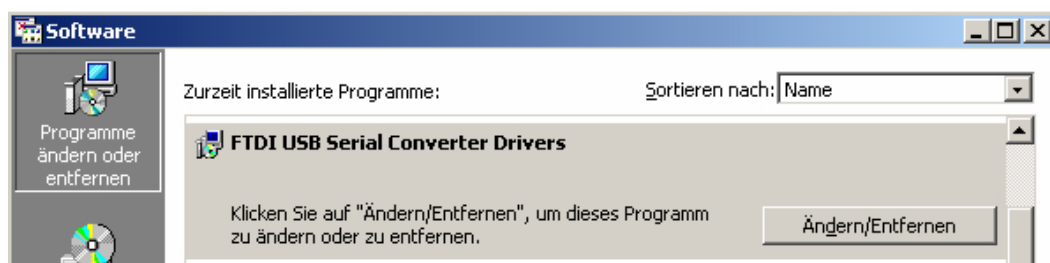


Image 6-1: FTDI USB Serial Converter Drivers

In the next window click on *Continue* and *Finish*.



# 7 Using Several DMX-USB Devices

In principle it is possible to use several DMX-USB devices with one PC. However, you have to install the driver for each additional device and will end up with an additional VCP each time.

See **View and Change the Communications Port.**

Caution:

Win98 may permit only one driver installation. In that case you can only work with one device.

If you have questions, please contact:

Mitutoyo Europe GmbH

Borsigstraße 8-10

41469 Neuss

Tel. : 02137 102 0

Fax. : 02137 8685

[info@mitutoyo.eu](mailto:info@mitutoyo.eu)

[www.mitutoyo.eu](http://www.mitutoyo.eu)

## 8 Appendix A

The installation depicted here took place under Windows2000. It is similar for other Windows versions. The device name is displayed.

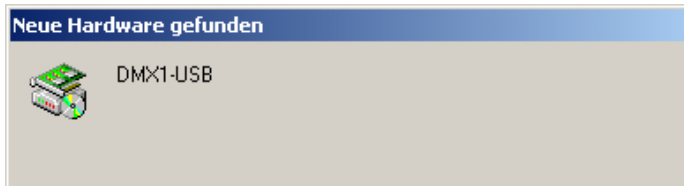


Image 8-1: DMX1-USB

The device name is displayed.

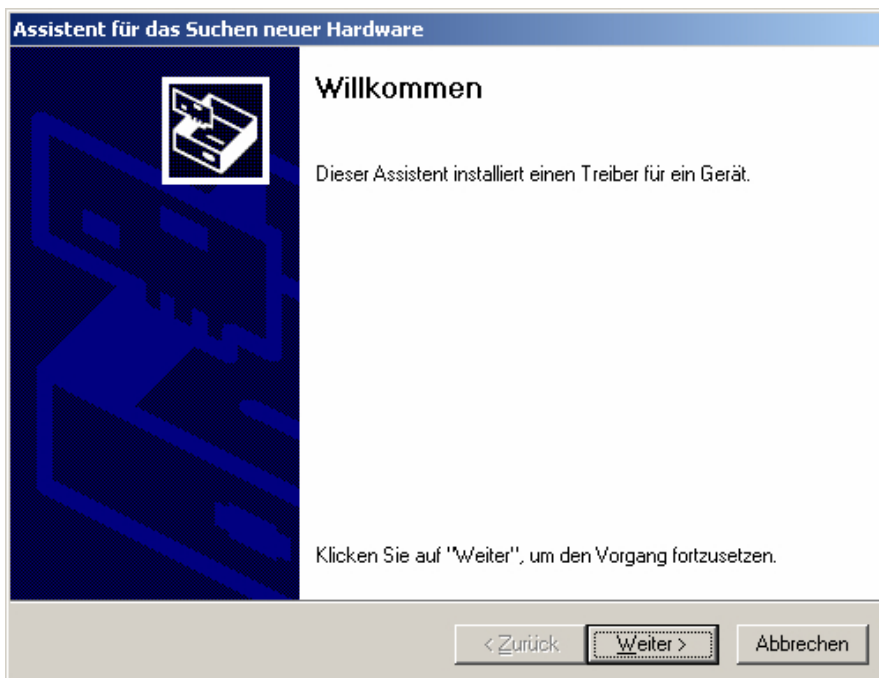


Image 8-2: Assistent

Click on Continue.



Image 8-3: Hardwaretreiber installieren

Select the option that searches for a driver (if required) and click on Continue.



Image 8-4: Installations Assistent

Let the system search the CD provided. Click on Continue.



Image 8-5: Treiber suche

The system should find the **ftdibus.inf** file for the **USB Serial Converter**. Click on *Continue* to install the correct driver.

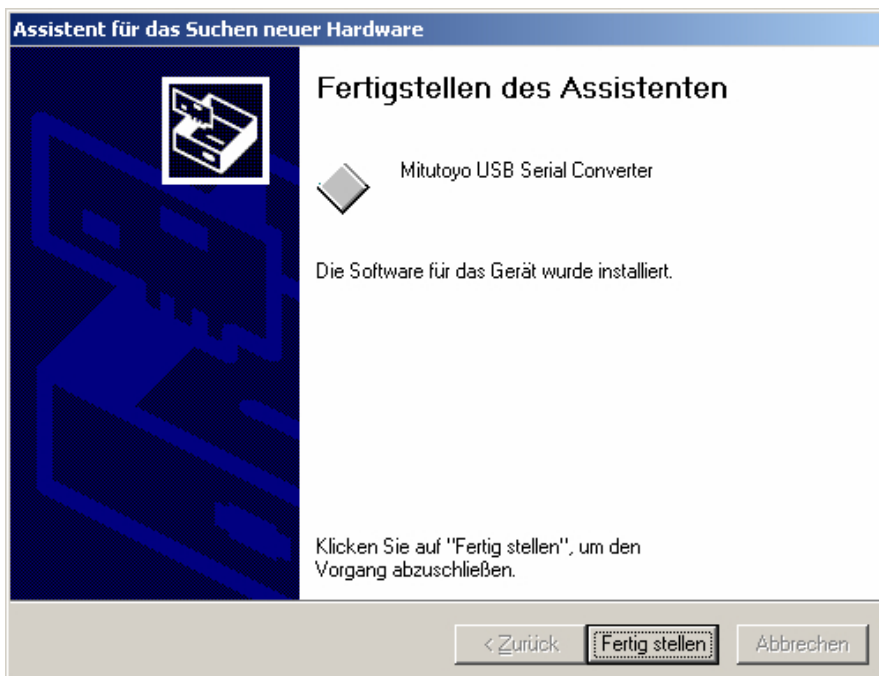
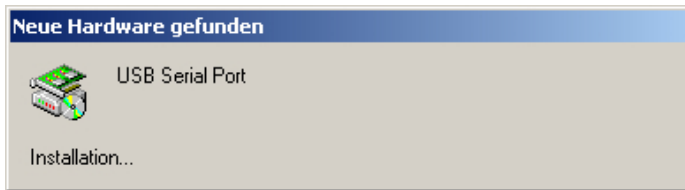


Image 8-6: Hardware Assistent

Click on *Finish*. Then new hardware is discovered a second time.



*Image 8-7: Hardware Installation*

Proceed as you did with the first driver. The only difference is that the system now needs to find the **ftdiport.inf** file for the **virtual communications port**.

The driver installation is now complete.

## 9 Appendix B

If you want to change the COM port number, go to the Device Manager and right- click on **DMX Serial Port** and in the pull-down menu on *Properties*.

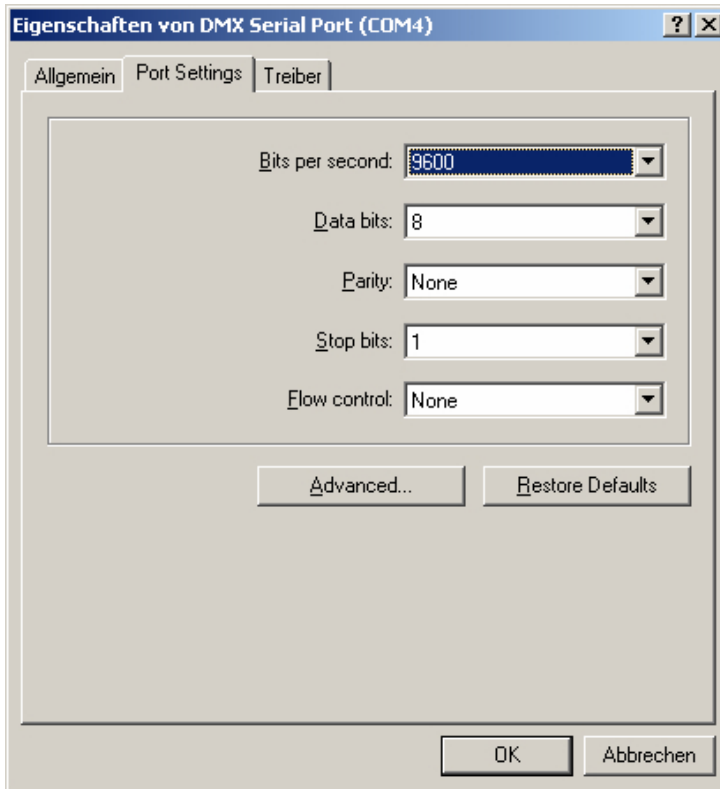
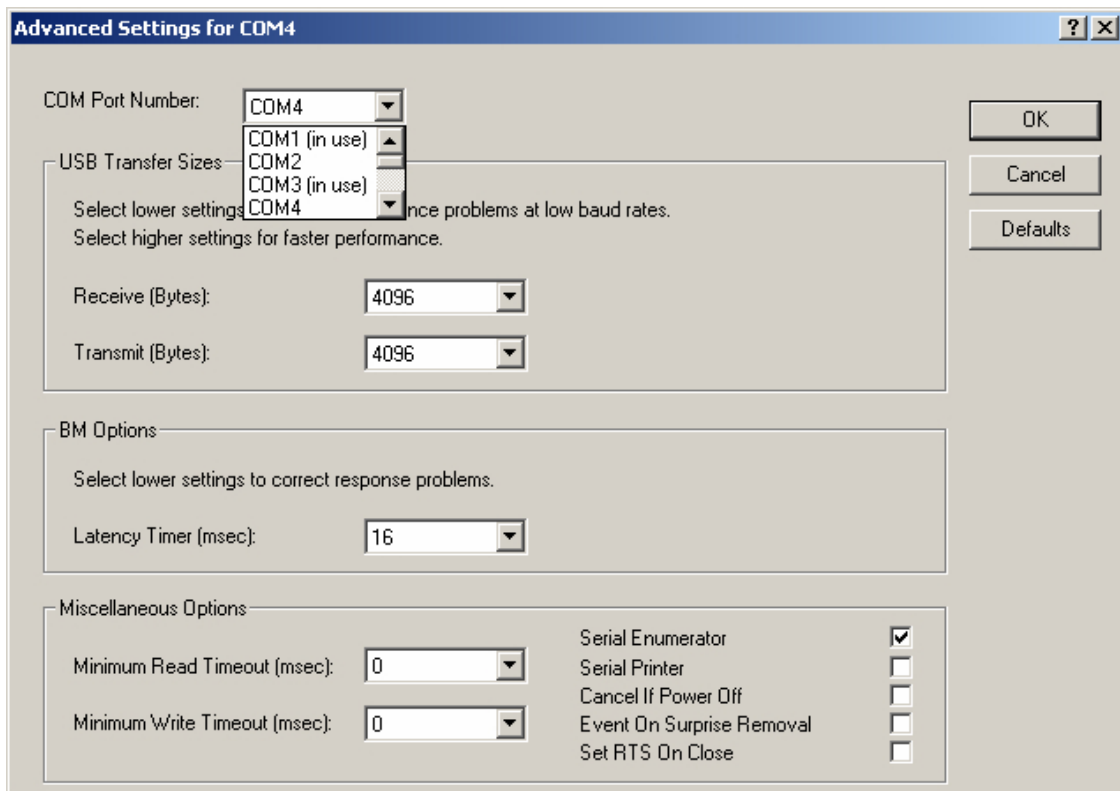


Image 9-1: Port setting

In this window click on the *Port Settings* tab and then on *Advanced...*



*Image 9-2: COM-Port setting*

You can now choose a different COM port. Apply your change by clicking on **OK**. Make sure, however, that you didn't change any of the other options by mistake.





## 10 Service network-EU

<b>Europe</b> <b>Mitutoyo Europe GmbH</b> Borsigstrasse 8-10, 41469 Neuss, GERMANY TEL: 49(0)2137 102-0 FAX: 49(0)2137 102-351	<b>France</b> <b>Mitutoyo France</b> Paris Nord 2-123 rue de la Belle Etoile, BP 59267 ROISSY EN FRANCE 95957 ROISSY CDG CEDEX, FRANCE TEL: 33(0)149 38 35 00
<b>Mitutoyo CTL Germany GmbH</b> Von-Gunzert-Strasse 17, 78727 Oberndorf, GERMANY TEL: 49(0)7423 8776-0 FAX: 49(0)7423 8776-99	<b>M3 Solution Center</b> LYON Parc Mail 523, cours du 3ème millénaire, 69791 Saint-Priest, FRANCE
<b>KOMEG Industrielle Messtechnik GmbH</b> Zum Wasserwerk 3, 66333 Völklingen, GERMANY TEL: 49(0)6898 91110 FAX: 49(0)6898 9111100	<b>M3 Solution Center</b> STRASBOURG Parc de la porte Sud, Rue du pont du péage, 67118 Geispolsheim, FRANCE TEL: 33(0)149 38 35 80
<b>Germany</b> <b>Mitutoyo Deutschland GmbH</b> Borsigstrasse 8-10, 41469 Neuss, GERMANY TEL: 49(0)2137 102-0 FAX: 49(0)2137 86 85	<b>M3 Solution Center</b> CLUSES Espace Scionzier 480 Avenue des Lacs, 74950 Scionzier, FRANCE TEL: 33(0)1 49 38 35 90
<b>M3 Solution Center</b> Hamburg Tempowerkring 9-im HIT-Technologiepark 21079 Hamburg, GERMANY	<b>M3 Solution Center</b> TOULOUSE Aeroparc Saint Martin Cellule B08 ZAC de Saint Martin du Touch 12 rue de Caulet 31300 Toulouse, FRANCE TEL: 33(0)1 49 38 42 90
<b>M3 Solution Center</b> Berlin Carl-Scheele-Straße 16, 12489 Berlin, GERMANY TEL: 49(0)30 2611 267	<b>M3 Solution Center</b> RENNES ZAC Mivoie Le Vallon 35230 Noyal-Châtillon sur Seiche, RANCE TEL: 33(0)1 49 38 42 10
<b>M3 Solution Center Eisenach</b> Heinrich-Ehrhardt-Platz 1, 99817 Eisenach, GERMANY TEL: 49(0)3691 88909-0 FAX: 49(0)3691 88909-9	<b>Italy</b> <b>MITUTOYO ITALIANA S.r.l.</b> Corso Europa, 7 - 20020 Lainate (MI), ITALY TEL: 39 02 935781 FAX: 39 02 9373290-93578255
<b>M3 Solution Center Ingolstadt</b> Marie-Curie-Strasse 1a, 85055 Ingolstadt, GERMANY TEL: 49(0)841 954920 FAX: 49(0)841 9549250	<b>M3 Solution Center</b> BOLOGNA Via dei Carpinini/A - 40011 Anzola Emilia (BO), ITALY TEL: 39 02 93578215 FAX: 39 02 93578255
<b>M3 Solution Center Leonberg</b> Steinbeisstrasse 2, 71229 Leonberg, GERMANY TEL: 49(0)7152 6080-0 FAX: 49(0)7152 608060	<b>M3 Solution Center</b> CHIETI Contrada Santa Calcagna - 66020 Rocca S. Giovanni (CH), ITALY
<b>Mitutoyo-Messgeräte Leonberg GmbH</b> Heidenheimer Strasse 14, 71229 Leonberg, GERMANY TEL: 49(0)7152 9237-0 FAX: 49(0)7152 9237-29	<b>M3 Solution Center</b> PADOVA Via G. Galilei 21/F - 35035 Mestrino (PD), ITALY TEL: 39 02 93578268 FAX: 39 02 93578255
<b>U.K.</b> <b>Mitutoyo (UK) Ltd.</b> Joule Road, West Point Business Park, Andover, Hampshire SP10 3UX, UNITED KINGDOM TEL: 44(0)1264 353 123 FAX: 44(0)1264	<b>Belgium / Netherlands</b> <b>Mitutoyo BeNeLux</b> <b>Mitutoyo Belgium N.V.</b> Hogenakkerhoekstraat 8, 9150 Kruibeke, BELGIUM TEL: 32(0)3-2540444 FAX: 32(0)3-2540445
<b>M3 Solution Center</b> Coventry Unit6, Banner Park, Wickmans Drive, Coventry, Warwickshire CV4 9XA, UNITED KINGDOM TEL: 44(0)2476 426300 FAX: 44(0)2476	<b>Mitutoyo Nederland B.V.</b> Wiltonstraat 25, 3905 KW Veenendaal, THE NETHERLANDS TEL: 31(0)318-534911
<b>M3 Solution Center</b> Halifax Lowfields Business Park, Navigation Close, Elland, West Yorkshire HX5 9HB, UNITED KINGDOM TEL: 44(0)1422 375566 FAX: 44(0)1422 328025	<b>Poland</b> <b>Mitutoyo Polska Sp.z o.o.</b> Ul.Graniczna 8A, 54-610 Wrocław, POLAND TEL: 48(0)71354 83 50 FAX: 48(0)71354 83 55
<b>M3 Solution Center</b> East Kilbride The Baird Building, Rankine Avenue, Scottish Enterprise Technology Park, East Kilbride G75 0QF, UNITED KINGDOM TEL: 44(0)1355 581170 FAX: 44(0)1355 581171	

<b>Hungary</b> <b>Mitutoyo Hungária Kft.</b> Záhony utca 7, D-épület / fsz, 1031 Budapest, HUNGARY TEL: 36(0)1 2141447 FAX: 36(0)1 2141448	<b>Sweden</b> <b>Mitutoyo Scandinavia AB</b> Släntvägen 6, 194 61 Upplands Väsby, SWEDEN TEL: 46(0)8 594 109 50 FAX: 46(0)8 590 924 10
<b>Switzerland</b> <b>Mitutoyo (Schweiz) AG</b> Steinackerstrasse 35, 8902 Urdorf, SWITZERLAND TEL: 41(0)447361150 FAX: 41(0)447361151	<b>M3 Solution Center</b> Alingsås Ängsvaktaregatan 3A, 441 38 Alingsås, SWEDEN TEL: 46(0)8 594 109 50 FAX: 46(0)322 63 31 62
<b>Mitutoyo (Suisse)</b> SA Rue Galilée 4, 1400 Yverdon-les Bains, SWITZERLAND TEL: 41(0)244259422 FAX: 41(0)447361151	<b>M3 Solution Center</b> Värnamo Storgatsbacken 1, 331 30 Värnamo, SWEDEN TEL: 46(0)8 594 109 50 FAX: 46(0)370 463 34
<b>Romania</b> <b>Mitutoyo Romania SRL</b> 1A Drumul Garii Odai Street, showroom, Ground Floor, 075100 OTOPENI-ILFOV, ROMANIA TEL: 40(0)311012088 FAX: 40(0)311012089	<b>Czech Republic</b> <b>Mitutoyo Česko s.r.o.</b> Dubská 1626, 415 01 Teplice, CZECH REPUBLIC TEL: 420 417-514-011 FAX: 420 417-579-867
<b>Showroom in Brasov</b> Strada Ionescu Crum Nr.1, Brasov Business Park Turnul 1, Mezanin, 500446 Brasov-Judetul Brasov, ROMANIA TEL/FAX: 40(0)371020017	<b>Mitutoyo Česko s.r.o.</b> <b>M3 Solution Center</b> Ivančice Ke Karlovu 62/10, 664 91 Ivančice, CZECH REPUBLIC TEL: 420 417-514-011 FAX: 420 417-579-867
<b>Russian Federation</b> <b>Mitutoyo RUS LLC</b> 13 Sharikopodshipnikovskaya, bld.2, 115088 Moscow, RUSSIAN FEDERATION TEL: 7 495 7450 752	<b>Mitutoyo Česko s.r.o.</b> Slovakia Branch Hviezdoslavova 124, 017 01 Povážská Bystrica, SLOVAKIA TEL: 421 948-595-590
<b>Finland</b> <b>Mitutoyo Scandinavia AB Finnish Branch</b> Viherkiittäjä 2A, 33960, Pirkkala, FINLAND TEL: 358(0)40 355 8498	<b>Austria</b> <b>Mitutoyo Austria GmbH</b> Johann Roithner StraÙe 131 A-4050 Traun, AUSTRIA TEL: 43(0)7229 23850 FAX: 43(0)7229 23850-90
	<b>Götzis Regional Showroom</b> Lasten StraÙe 48A 6840, AUSTRIA



# Mitutoyo



For the EU Directive, Authorized representative and importer in the EU:  
Mitutoyo Europe GmbH Borsigstrasse 8-10, 41469 Neuss, Germany  
Homepage: [www.mitutoyo.eu](http://www.mitutoyo.eu)

2019-02-21